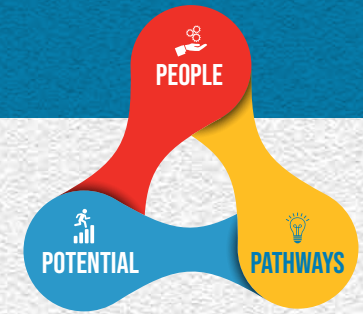


# SLAC Strategy Map 2020 - 2025

## People - Potential - Pathways



<b>Capacity to Deliver</b> What are our most important financial outcomes?	Core funding support from State and Local governments	Strategic capacity building projects funding	Maximised capacity to generate own income	Innovative funding models through partnerships	Leveraging revenue with in-kind contributions of professional expertise
	Diverse, inclusive and professional organisation	Facilitating opportunities to learn and contribute at all levels	CoCO's is a Model Social Enterprise	Catalyst for positive change in the lives of people who connect with us	Leader in developing innovative responses to local challenges delivering measurable impact across Springvale and Dandenong
<b>Community Perspective</b> How should we appear to community?	<b>Building Community Connections</b>			<b>Learning and Skills Development</b>	
	Stronger partnerships with philanthropy and business	Direct poverty relief assistance. Address issues of social and cultural isolation	CoCO's evolving into a profitable Social Enterprise making measurable social, economic and environmental impact.	Quality programs fostering creativity to achieve learning outcomes and pathways to economic participation	Integrate community development and learning for measurable outcomes
<b>Strategic Priorities</b> At what do we need to excel to fulfill community expectations?	Marketing and Promotion	Two way flexible support and guidance to staff and committee enabling achievement	Use of technology as an operational and community engagement tool.	Practice and promote advanced cross – cultural competency at all levels	Find solutions to sustain RTO/VET programs for the community irrespective of systemic policy challenges
	<b>Governance and Management</b> What do we need to improve to sustain our ability to deliver?				